

# The ABC's of Winget Park



# Admin Team



Kira Michaw, Principal  
kira.michaw@cms.k12.nc.us



Kimberly White, Assistant Principal  
kimberly.white@cms.k12.nc.us



Pazley Leone, Dean of Instruction  
pazleyd.leone@cms.k12.nc.us



# Birthdays



We love celebrating birthdays at Winget Park. If you would like to celebrate your child's birthday, you can join during their lunch time. Please ask your child's teacher what time they have lunch. You can bring a store bought treat to share too.

We can't do "parties" for birthdays though. We ask that the treat be something small, that can be eaten during lunch time in the cafeteria. We ask that this be nut-free. Lastly, we ask that parents refrain from bring juice boxes or balloons.

Once lunch is over, and we all sing happy birthday, we ask that you return to the front office and sign out. For school safety reasons, we can not have families walking back to class or recess with their child. Thank you for helping us keep all of our students safe!

# Car Rider Line

Our car rider line is a well-oiled machine by week 2! The line is in the front of the school building. Enter in the second entrance that is also for the park. Make the first right at the stop sign.

**Prek and Extensions parents do NOT enter here.** The car rider line for Prek and Extensions is in the back of the building. Enter the first entrance you seen with the large rock. This is the bus lot. You will see the teachers waiting just past the playground in the back.

In the morning, we begin allowing students in the school when the bell rings at 8:45. If you come before then, please keep your child with you in the car, and do not leave. We do not have any supervision outside until the bell rings. Children should exit the passenger side of the car.

In the afternoon, we use KidAccount. You will receive a plastic card with your child's code. This card must be with you each time you come to get your child. Please remain in your car and follow the car line. Do not get out of the line, or drive around other cars. Our afternoon dismissal begins at 4:15, however, cars will begin lining up as early as 3:15.



# Dismissal

We dismiss at 4:15. We have several walkers at our school, along with car and bus riders. Please refer any bus related questions to Kim White

Bus rider tips:

- It is recommended that you arrive at your bus stop 10-15 minutes early in the AM and PM.
- It is strongly encouraged that an adult remains with children at the bus stop. (K-5 students can be let off the bus without an adult/parent present).
- PreK parents are required to be at the bus stop
- In the afternoon, buses will depart from Winget Park between 4:15-4:25 Parents are encouraged to be at the bus stop each afternoon
- Parents of bus riders will want to download the Here Comes the Bus app. This app is a bus tracking system and can allow you to locate and track your child's bus. CMS code for the app is: 73877.
- Per CMS, students may only be assigned to one bus. Parents will need to apply for an alternative stop if you would like to change your afternoon bus from the home stop to an afterschool program. Alternate stop.
- Afternoon bus numbers change frequently, therefore buses are assigned a "slot" that will allow students to consistently board their correct bus.
- If you feel that your child's bus stop is unsafe, you may complete the unsafe stop form for the transportation team to investigate. You can find this on the CMS website.

Winget Park has two on campus after-school programs. ASEP is ran by CMS for a small cost. We also have the Parks and Rec after school program.



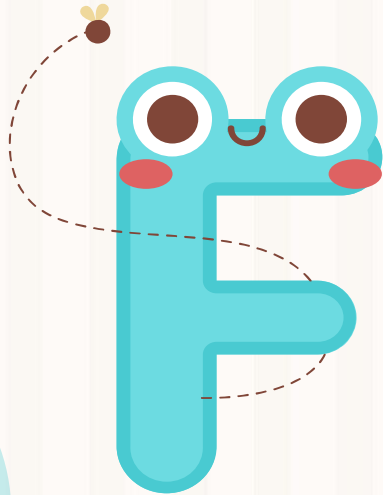
# Early Dismissal



If you need to pick up your child early, please make sure you have your ID with you. If you are having someone else pick up your child, they must have their ID and be on your approved pick up list.

We will NOT dismiss any students for early dismissal after 3:15. If you need to dismiss your child early, please arrive to pick them up before 3:15. This is for school safety reasons.

# Family Communication



We communicate with our families using a variety of methods. We use ParentSquare for school wide announcements, and private messages to parents. This is accessible via the ParentSquare app. More information will come from your child's teacher.

We also have a private Facebook group. Please join us if you have not already:

<https://www.facebook.com/groups/659805832623227>

Please make sure you have an updated phone number in the front office. At any time during the school year, make it a priority to let the office know if your number changes. In case of emergencies, we will call whichever number we have in the front office.

# Gym class and other Enrichment classes

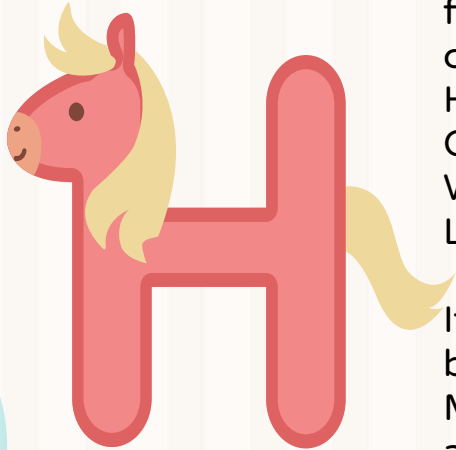


Our Enrichment classes are scheduled by the week. For example, you may have Physical education for week one, then Makerspace for week two and so on. The cycle repeats every five weeks. We offer P.E., Makerspace, STEM, Music and Art. When it is your physical education week, please remember to dress your child appropriately, with sneakers as well.

We share our gym with Charlotte Mecklenburg Parks and Rec, and we just got a brand new gym floor. Please help us to keep it nice by sending your children with the proper footwear.



# HOWL Award



Students can earn the I am a Winget Park Wolf- HOWL Award from any staff member in the building by showing the HOWL characteristics.

H- Have respect for all

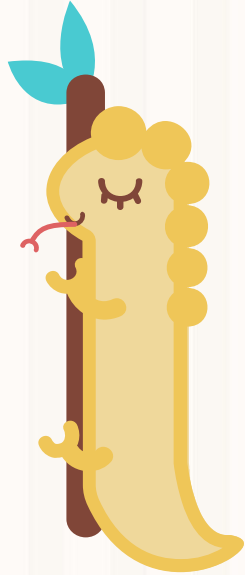
O- Outcomes

W- Work Hard

L- Leadership always.

If a student receives the award, one of the above categories will be circled on the award and taken home to their families. Ms. Michaw will be alerted, and announce the student on the morning announcements, and then visit their classroom to let them spin the Wheel of Wow for prizes!

# (School) Improvement Team



Each month our School Improvement Team (SIT) meets to discuss the progress of our school. We meet via zoom, or in-person, depending on the month at 6 pm. Everyone is invited!

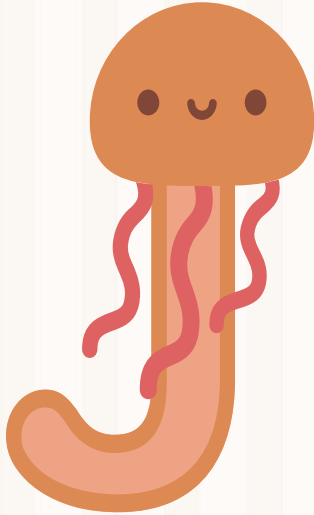
# Joining our PTO

Here at Winget Park- we have the BEST PTO. If you would like to join our PTO please visit this website:

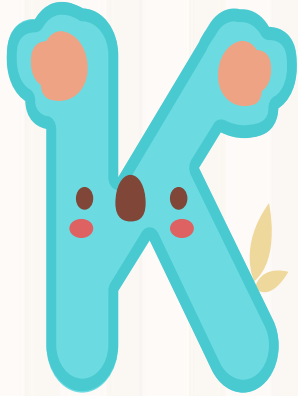
<https://sites.google.com/site/wingetparkpto/home?authuser=0>

Our PTO sponsors several events throughout the school year, including our major fundraisers. The funds are always spent directly on our students.

They also sell spirit wear, which is an approved shirt as part of our uniforms. Check them out!



# Keeping up with Student Belongings



Please put your child's name in all of their personal belongings (coats, lunch boxes, water bottles etc.) Your last name is better than the first, so we can make sure we can locate the owner if we find something. Help your child by reminding them to always look for their belongings after recess.

We do have two locations for lost and found. The first is directly by the front door when you walk in. Our other location is by the cafeteria on the hooks, just outside the bathroom.

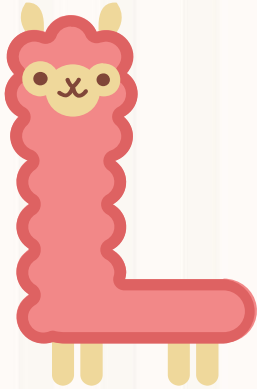
Each quarter, we donate any items in the lost and found that have not been claimed to Goodwill.

# Lunches

For the this school year, lunch is \$2.50 for Pre-k students and \$2.75 for K-5 students.

Please do not worry if children forget their lunches. The children may eat the school provided meals if they do not bring their lunches to school. However, you are always welcome to drop off lunchboxes to the front office.

Parents are invited to eat lunch with their children. Please arrive early for their assigned lunch time to give yourself time to sign in at the front office. For safety reasons, please do not take photos with other students in them. When lunch ends, we ask that you return to the front office to sign out. Please do not follow your child to class or recess.



# Medication

We have a school nurse on campus 5 days a week. If she is unavailable, we have other staff members trained in medication administration.

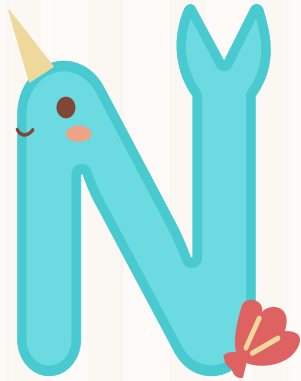
Any medications that need to be kept at school must have the proper paperwork completed. They must be given in the original container with the dosage information from the pharmacy attached.

We do not provide students over the counter medications of any kind. All medications must have documentation provided from the physician. If you have any questions, please contact our nurse by calling the school at 980-343-1063.



# North Carolina End of Grade Tests

All students in grades 3rd, 4th and 5th are required to take the North Carolina End of Grade Tests. In 3rd and 4th grade, they will take a reading and math test. In 5th grade, they will take a reading, math and science test.



These tests are given within the last 10 days of the school year, as mandated by North Carolina.

Our 3rd graders are also given a Beginning of Grade test. This test is very similar to their EOG. Most 3rd graders will not pass this test when it is given in September, because they have not been taught the curriculum yet. You will receive more information before this test is given.

# Outdoor Activity Time



North Carolina mandates that ALL student receive 150 minutes of physical activity time each week. This is called Healthy Active Child (HAC). At Winget Park, we satisfy this requirement through outdoor activity time for 30 minutes each day.

This may be a structured outdoor activity, or “free play” depending on the day and location of each classroom. All classrooms will rotate to different play areas each day. For example on Monday a class may have the playground, but Tuesday they play on the soccer fields.

It is unsafe for over 100 students to play in the same area at the same time, for this reason- all classes K-5 play in different locations each day.



# PowerSchool

Powerschool is used for all 3rd, 4th and 5th graders. Using this platform, you can see your child's assignments and grades.

This platform is available via a mobile app, by the same name. In order to access your child, you will need to get their PIN number from the front office. These will be sent home at the start of the school year.

However, you can also call the front office to receive your child's student ID number and PIN number.



# Quick Ways to contact your child's teacher



Our teachers are able to check their email during their planning period. And while some may catch a second to check it throughout the day, generally, they are too busy teaching : )

The best way to reach your child's teacher is via Parent Square. However, if it is a time sensitive matter (my child needs to go home on the bus today etc) please message them, and also call the front office. We can not guarantee that they will see the message before dismissal. Calling the front office ensures that we are aware and able to make the change. We will not make any changes to transportation after 3:15.

You are always welcome to email or call the school number at 980-343-1063 to speak with them as well. Please note that they are not able to call back while they have students present. All CMS employees are given 24 hours to return messages.

# Reporting Absences



Please report the reason your child is absent- every time they absent. Excused absences include illness or injury, doctors appointments (with a note), death in the immediate family, court proceedings when the child is party to the action, religious observances and educational opportunities. Any other excuse for an absence is considered unexcused. This is a NC state policy.

Educational Opportunities must be approved by the principal PRIOR to the absence. The form to complete can be found here:

<https://forms.gle/Sd8z22yxrY9XuAwb9>

You can report absences by calling the front office at 980-343-1063, or completing this form:

<https://schools2.cms.k12.nc.us/Pages/absence.aspx?sid=>

Students receive formal letters if they miss 3, 6 or 10 days. If you child misses more than 10 days of school, truancy court is an option.

# School Counselors

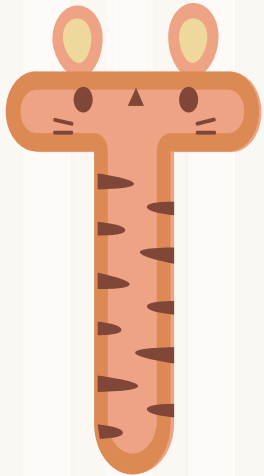


Our amazing school counselors are Ms. Danielle Shaul and Ms. Barbara Aligwekwe. Ms. Shaul serves our K-2 families and Ms. Aligwekwe serves our 3-5 families.

Our counselors are available to do small groups, short-term individual sessions, or referral for long term counseling with an outside agency that comes to Winget Park.

# Transportation

CMS Transportation is a separate department from Winget Park. However, we are able to help you with any basic transportation needs. Every student is required to register for a bus, through the CMS transportation website. This is done by parents. More information can be found here: <https://www.cmsk12.org/Page/195>



Once a student is registered, Winget Park receives their ridership information. Students are not permitted to ride a bus home from school if they are not registered to this bus and have their bus pass. Please reach out to Ms. Kim White at 980-343-1063 for your bus questions. You can also email her at [kimberly.white@cms.k12.nc.us](mailto:kimberly.white@cms.k12.nc.us)

Please speak with your children about appropriate bus behavior. The bus driver is responsible for safely driving them home, and must be able to focus on the road. Students should not be moving seats, standing, yelling or touching other students on the bus. If a student has multiple bus referrals, they may be removed from the bus anywhere from 1 day to the rest of the school year.

# Uniforms

Winget Park is a Uniform school. Our uniforms are navy or khaki bottoms(slacks, pants, skirts, shorts, skorts, jumpers, tights/leggings). We allow any color shirt on the top, but it must be one of the following: polo(collared), oxford, turtleneck, peter pan collared blouse. .We also allow any Winget Park Spirit shirts.

Students may wear cardigans or sweaters/sweatshirts on top as well.

We do not allow any of the following, with the exception of spirit days or our uniform free day once a month:

- ~t-shirts other than WP Spirit Shirts
- ~Sleeveless shirts
- ~Sweatpants, athletic shorts
- ~Jeans



# Visitors/Volunteer Registration

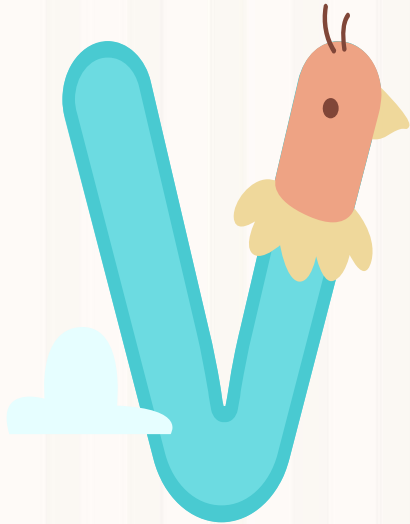
We welcome visitors during lunch times and other special events. Please bring your ID with you and be prepared to sign into our Lobby Guard system.

We will not allow any visitors in that do not have their ID with them for school safety purposes.

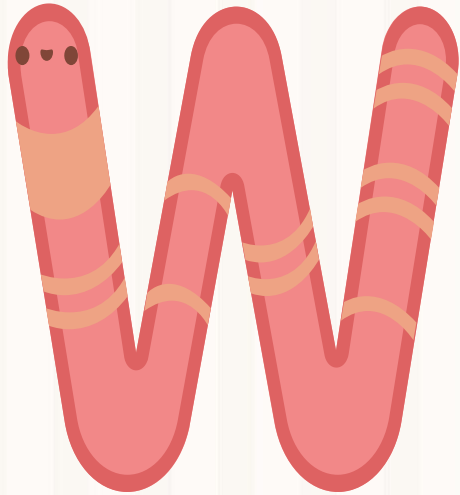
When you come to visit for lunch, we ask that you return to the front office to sign out after lunch ends. Please do not go to the classrooms or recess. This is a school safety concern.

If you want to sign up as a volunteer, this helps you “skip the line” during large events, as you won’t have to sign into Lobby guard. You can sign up to be a volunteer here: [cmsvolunteers.com](https://cmsvolunteers.com)

Completing the above process does not require you to volunteer. It must be completed yearly, as previous sign-ups do not transfer each year.



# Wolf of the Day



Wolf of the Day is a long standing Winget Park tradition. For over 10 years, students have been earning wolf of the day. In each classroom, one student is named every day. They receive a certificate to share with their family. At the end of the school year, any student who received 10 or more Wolf of the Days, gets to put their handprint on our walls- to leave a legacy that lasts forever!



# eXcellent Customer Service



**Deltasha Cunningham**

Treasurer

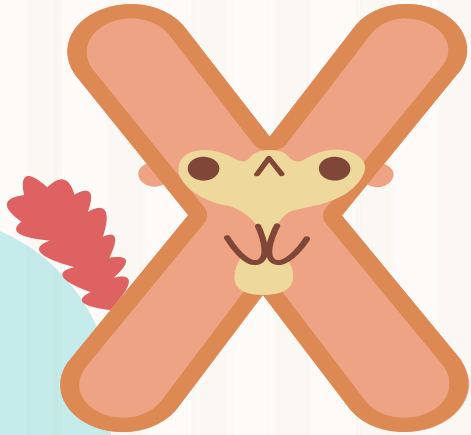


**Treecie Lewis**

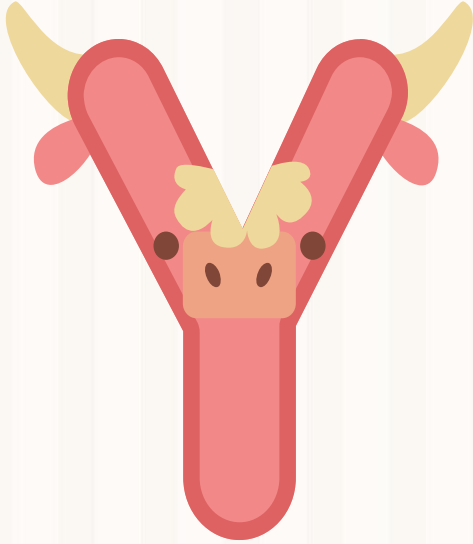
Registrar

Our front office staff is second to none! Ms. Lewis handles everything from answering the phone and the door, to registering students for classes.

Ms. Cunningham helps Ms. Lewis whenever needed. She handles all things related to money, like field trips or media center fees etc.



# Yet University



We have the unique opportunity of piloting the systematic, intentional nurturing of young learners through Yet University. Yet U provides ALL 1st graders with consistent access and exposure to critical and creative thinking skills through the use of Primary Education Thinking Skills (PETS) and lesson to help instill the growth mindset.

Ms. Ashley Murff, our TD teacher, works closely with all of our first grade teachers to facilitate Yet U at Winget Park!

# Zillions of ways to help at home

We are so grateful for everything you as families to for Winget Park. We have the best school community in all of CMS!



If you want to help your child more at home- have them read. They can read anything and everything. It is helpful if they read 30 minutes a night, before it is bedtime.

We would appreciate if you could also help your child by asking them how their day was and reminding them of school expectations.

We are always here to help! Please don't hesitate to reach out any time!